



DAPHNE HIGH SCHOOL BAND HANDBOOK

2025-2026 EDITION

WWW.DAPHNE.BAND

TABLE OF CONTENTS

PAGE 02

Welcome Message	Page 03
Membership Information	Page 04
Membership Information (continued)	Page 05
Attendance Policy	Page 06
Grading Policy	Page 07
Band Leadership Hierarchy	Page 08
Student Leadership	Page 09
Band Fees	Page 10
Band Fees (continued)	Page 11
Band Trips and Chaperones	Page 12
Marching Band	Page 13
Concert Bands	Page 14
Indoor Ensembles	Page 15
Important Dates	Page 16
Band Camp	Page 17
Contact Information	Page 18

WELCOME MESSAGE

Dear Band Member and Band Parent/Guardian,

Welcome to the The Sound of the Eastern Shore! We are very proud of our band program here at Daphne High School and are glad that you have chosen to be a part of our tradition. Our band is made of many different performing groups consisting of the Marching Band, Wind Ensemble, Symphonic Band, Concert Band, Jazz Band, Indoor Percussion Ensembles, Color Guard, Winter Guard, and Majorettes. Each of these groups are very competitive and have won numerous awards in the Southeast region and nationally. You will not be disappointed in the quality of our program.

Parents, I hope to see all of you at our monthly booster meetings. Our booster organization is integral to the financial success of this organization. Without the support of our booster organization, we would not be able to function as the best music program in our area.

The Daphne High School band program is fortunate to have outstanding instructors for each section. Your student will receive one-on-one attention in every ensemble. I am pleased to have Chris LeBatard, Jacob Moorner, and Ryan Pippin as our associate directors. They, along with the rest of our staff, are the best in the area.

I am pleased to welcome you to the The Sound of the Eastern Shore!

Sincerely,

Jamar Dumas
Director of Bands
Daphne High School
www.daphne.band
jdumas@bcbe.org
(251) 621-1080



Course Description

The Daphne High School band program is an organization that provides musical and extra-musical experiences for all students of Daphne High School. All students are welcomed to participate in this activity provided they pass all audition requirements. Members are required to participate both semesters. For continued growth in individual musicians and ensembles, students are required to be in the marching band in the fall and in a concert band/winter guard in the spring. This is integral to the students and the program! Auditions for band placement and chair take place at the conclusion of marching band season in late October or early November. Exceptions are made on a case-by-case basis. Concert Band does not start in January; it starts in November!

Code of Conduct

All students in the Daphne High School band program are required to abide by all rules, policies, and procedures of the Daphne High School band program, Daphne High School, and Baldwin County Public Schools. Students who violate any rules, policies, and/or procedures are subject to dismissal from the band program.

Home School, Virtual School, and Baldwin Prep Students

All Home School, Virtual School, and Baldwin Prep students are eligible to fully participate in the band program if they enroll in Daphne High School and are on the roster for band class (7th period). Home School, Virtual School, and Baldwin Prep who are not enrolled in the class can still participate in band, but only in parades, pep rallies, and in the stands. Based on ABA (Alabama Bandmaster's Association) bylaws, students are not be allowed to perform in any type of adjudicated performance, such as Music Performance Assessment or winter guard competitions. Students will also not be eligible to audition for All-District, All-State, or Solo and Ensemble.

After-School Rehearsals

After-school rehearsals include Tuesday and Thursday until 5:00 p.m. for the full band – any rehearsal missed due to an unexcused absence can prevent you from performing. Habitual absences will prevent you from performing – regardless if excused or not. Grades are associated with rehearsals and performances. Unexcused absences are zeros. Excused absences are still absences. Students will be required to do makeup assignments for any missed rehearsals or performances. Makeup assignments will consist of scales, sight reading and/or show/concert music. It is the student's responsibility to ask for makeup assignments. Habitual excused absences may result in losing your position in the ensemble. Doctor's notes are required for absences to be excused. Visual Ensemble schedule will be subject to change but a two-week notice will be given.

School-Owned Equipment

The Daphne High School band program is fortunate to be able to provide a limited number of uniforms, musical instruments, and auxiliary equipment for students. Students are responsible for taking proper care of all school-owned equipment. All school-owned equipment must be checked out with a band director prior to use and/or taking home. Students caught using/taking home school-owned equipment or neglecting them will be charged the full cost to repair or replace the equipment.

Student Leadership

Students interested in a leadership position must fill out an application form, write an essay pertaining to leadership, and attend a private interview with the band directors. Applicants should be in good standing with the band program and Daphne High School. Discipline issues, poor attendance, low grades, and outstanding fees can disqualify a student from leadership. Directors and staff reserve the right to dismiss someone from a leadership position at any time if deemed necessary. Students applying for drum major also required to attend a leadership clinic audition for a panel of judges.

Attendance Policy

All rehearsals and performances are mandatory. This includes (but is not limited to): band camp, 7th period band class, after-school rehearsals, Daphne High School athletic events that include the band, parades, Saturday rehearsals and contests, the Baldwin County Band Jamboree, concerts, Music Performance Assessment, and all auxiliary/percussion camps. Beginning this year, students must fill out an absence request form to notify the band staff of any planned absence. The form must be electronically signed by the student and their parent/guardian, and submitted no less than 24 hours prior to the event. All absences are classified as “excused” or “unexcused”.

Excused absences include (but are not limited to):

- Health-related circumstances involving the student that require a doctor’s visit
 - Director’s will need a doctor’s note to deem the absence “excused”
 - Routine doctor’s appointments/check-ups do NOT qualify as excused absences
- Death in the family
- Scheduling conflict with another Daphne High School-affiliated organization
 - Directors must receive notice at least one week in advance of the scheduling conflict, otherwise it will be classified as “unexcused”.
 - Students may be required to miss an event with another Daphne High School organization depending on the needs of the band program. The directors will handle communication with the coach/teacher involved in the scheduling conflict to come up with a solution.
- Immediate family weddings (i.e. mother, father, brother, sister)
- Religious observances

Unexcused absences include (but are not limited to):

- Family vacations (regardless of how long they have been planned)
- Birthday parties
- No transportation (we can organize transportation if a student does not have a ride)
- Routine doctor’s appointments/check-ups
- Dentist/orthodontist appointments
- Suspension from school

Absences, whether they are excused or unexcused, will prevent a student from performing. An accumulation of unexcused absences will result in: low grades, forfeiture of a leadership role, demotion from an advanced/varsity ensemble, and/or dismissal from the band program.

Grading Policy

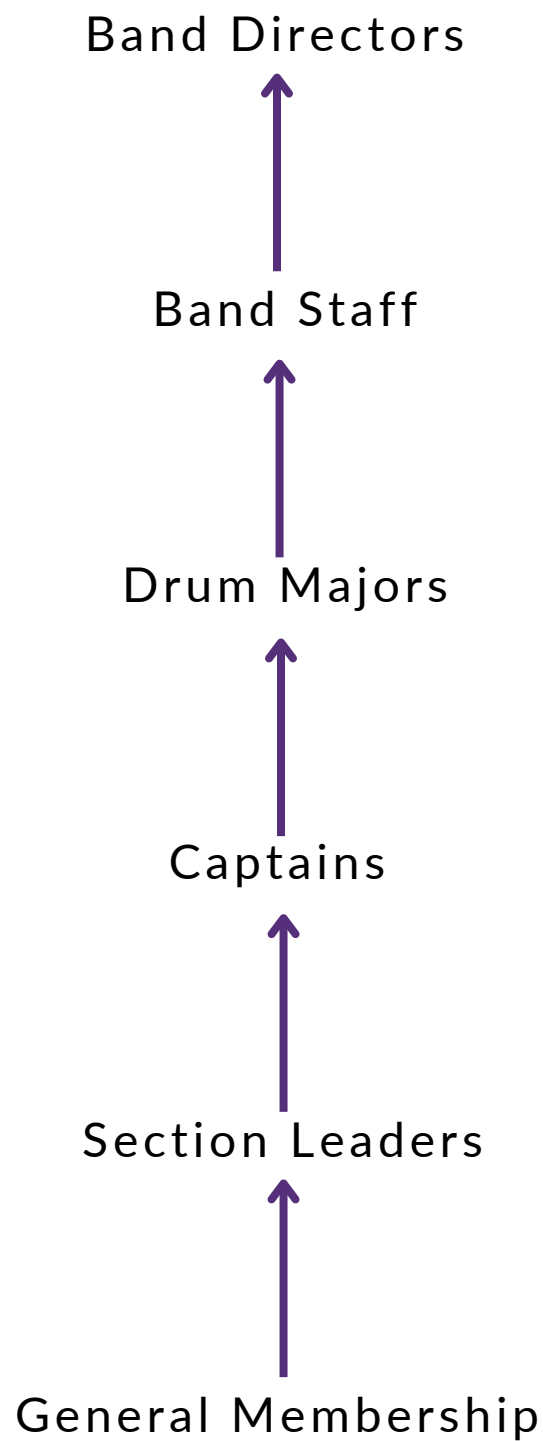
Band is a performance-based class. Because of this, formal assessment grades (60% of the student's grade) are associated with performances, auditions, and playing tests. In-class grades (40%) are associated with students coming to rehearsal prepared by (1) having all required equipment/materials, (2) having practiced/memorized their music/ choreography prior to coming to rehearsal, and (3) by participating in rehearsals. Formal assessments and in-class grades are graded on an "all or nothing" basis. For example, if a student misses one out of two after-school rehearsals during the week and it is deemed "unexcused", then they will receive a "0" for that week.

Exemptions

Excused absences and extenuating circumstances will result in the student being marked "exempt" in the grade book. It is important to note that exemptions in the grade book are not "100"s, rather they remove the assignment/assessment from the students final grade calculation. This means that subsequent grades in the grade book will have a much greater impact on the student's final grade.

Make-up Assignments

Make-up assignments are available for students who have "0"s in the grade book. It is the student's responsibility to ask the directors for makeup assignments. No make-up assignment will be given after 14 days when the "0" was issued in PowerSchool. The specific instructions of make-up assignments are determined by the directors. Typically, they will require the student to perform a piece of music/choreography or write a paper. Completed make-up assignments will result in the "0" being changed to "exempt" in PowerSchool. Students will not receive a numeric grade from a make-up assignment.



The following is a list of all student leadership positions in the band program along with with corresponding responsibilities.

Section Leader

- Create a positive atmosphere and build morale within your section
- Inform your section of announcements, rehearsal schedules, and changes daily
- Take attendance for your section at every band event
- Make phone calls/texts when someone in your section is absent or tardy
- Report attendance and behavior issues within your section to the directors
- Ensure that every member of your section is performing to a high standard
- Provide one-on-one attention to members who are struggling
- Schedule sectionals outside of rehearsal for sections who are behind musically and/or visually
- Model perfect rehearsal etiquette
- Be the first one to learn/memorize your music/choreography (including concert/winter season)
- Know the music/choreography to all of the parts in your section.
- Inspect your section's uniforms and equipment before every band event
- Lead warmups during pre-game sectionals
- Distribute forms, music, drill charts, and dots to your section
- Keep extra copies of music and/or drill charts for your section
- Organize your section's flip-folders
- Keep essential maintenance equipment on hand at all times
- Help captains load and unload the box trucks/equipment trailer

Captain

(Note: All of the responsibilities of section leaders apply to captains. If a section leader is not assigned to a particular section or is absent during an event or rehearsal, then the corresponding captain becomes the de facto section leader.)

- Load and unload the box trucks/equipment trailer
- Make copies of forms, music, and/or drill charts
- Keep all band members informed about upcoming auditions and print materials upon request
- Ensure that section leaders are fulfilling their responsibilities
- Be familiar with the music/choreography to all of your sections.

Drum Major

- Conduct the band during rehearsals, sporting events, pep rallies, and contests
- Create a positive atmosphere and maintain morale within the leadership team
- Inform leadership of announcements, rehearsal schedules, and changes daily
- Meet with the entire leadership team at least once a week to discuss the band's progress, opportunities for improvement, and set goals
- Ensure that captains and section leaders are fulfilling their responsibilities
- Act as a mediator when conflict arises amongst the membership
- Assist with attendance, locker assignments, bus lists, inventory audits, and equipment check-in/out
- Transport metronomes, PA speakers, speaker stands, and wireless microphones to and from the practice field and football stadium
- Keep track of all podiums and ladders when moving from one location to another

Band fees are a vital source of funding for the daily operations of the program. The fees cover all essential goods and services that keep our program running. All fees can be paid online through MySchoolBucks. Please make all checks payable to Daphne High School, then place them in an envelope and deliver to the front office (not the band office). Checks may not be over \$300 and more than 15 days old. The \$30 class fee can also be paid via check sent to the front office.

Annual Fees (Applies to ALL members)

- General Band Fee: \$450
 - Includes transportation, uniform rental/cleaning, equipment, music, and instruction.
 - Does NOT include personal items, food items, tuxedo and concert dress for concert season, band shoes, gloves, equipment, wind suits, jackets, reeds, oil, grease, and other instrument accessories
 - Can be paid all at once or by paying \$75/month starting in June with the final payment made in November ($\$75 \times 6 \text{ months} = \450)
 - Must be fully paid by November 1
 - Siblings of band members will receive discounts in increments of \$50, but will not surpass a total discount of \$150.
 - Child A: 450, Child B: 400, Child C: 350, Child D: 300, Child E: 300
- Activity Fee: \$30
 - This fee is charged by BCBE/Daphne High School

Marching Band Fees

(Note: All marching band fees are one-time costs unless replacements are needed.)

- All Members
 - Marching shoes: \$40
 - Water jug: First one is FREE, then \$15
 - Band jacket (optional): \$80 for S-XL, \$85 for 2XL+
- Brass and Woodwinds Only
 - Gloves: First pair is FREE, then \$5/pair
- Color Guard and Majorettes Only
 - Spirit Packs: \$250 for freshmen, \$90 for vets

Concert Band Fee

- Concert Tuxedo: \$130, Concert Dress: \$100
 - One-time cost unless a replacement is needed
 - Does NOT include shoes, socks, belts, accessories, or personal items

Winter Guard Fee

- Varsity: \$500, Junior Varsity: \$300
 - Paid annually
 - Includes travel, basic equipment, costume, and instruction
 - Does NOT include food, apparel, and personal items such as makeup, poms, etc.
 - Must be paid by December 1st

Percussion Ensemble Fee

- All percussionists: \$200
 - Paid annually
 - Includes travel, equipment, instruction, and music
 - Does NOT include sticks/mallets, food, band jacket, band shirt, or any other personal item
 - Basic black uniform (black button down shirt and black pants)
 - Must be paid by December 1st

Majorette Fee

- All majorettes: \$300
 - Paid annually
 - Includes instruction
 - Does not include equipment, costume, or personal items such as makeup, poms, etc.
 - Must be paid by December 1st

For the 2025-2026 school year, the band will take 6-8 school buses (or 4-5 charter buses) per trip. Bus manifests are created and maintained throughout the duration of the trip.

There are approximately 180-220 students in the band program. For trips with the full band, there are at least 4 directors, 4-6 adult staff members, and 18 chaperones. All chaperones will go through a mandatory training and have a valid BIB card. At least one director or staff member will be on every bus. We use a ratio of 1:10 to divide chaperones across buses. Smaller trips such as winter guard and percussion contests that have fewer students travelling, will also have fewer adults while maintaining the same ratio of adults to students.

Parents/guardians who are interested in becoming a chaperone must have a cleared background check through the Baldwin County Board of Education before going on a trip. **No adult is permitted to be on a bus with students without a cleared background check and BIB card.**

Chaperones will be placed at the back and middle of the bus prior to departure to monitor student behavior. Couples will be separated when the bus travels at night. Instances of misconduct must be reported to the band directors immediately.

Each bus will have at least one first aid kit that will be kept with a chaperone on each bus. One of the band directors will bring a medical backpack that contains a binder of student medical information, approved teacher-administered medication, and an automated external defibrillator (AED). The assigned director will carry the backpack with them at all times during the trip.

If a parent/guardian wishes to check out their student after the conclusion of an off-campus band event (i.e. away game, contest, MPA), then they must fill out a Bus Ride Exemption Form and submit it to the directors no later than 24 hours before the event. The exemption form can be found on the band website: www.daphne.band > Resources > Forms/Files.

The Daphne High School marching band, “The Sound of the Eastern Shore,” is the most visible and well-known performing ensemble of the band program. The band is a 200+ member organization that performs for all football games, parades, pep rallies, and up to four marching band competitions every year.

The band is comprised of woodwind, brass, and percussion instrumentalists, as well as visual performers, including color guard and majorettes. The role of the woodwind and brass sections is to provide the music, both melodically and harmonically, as well as visual movement. The role of the percussion sections is to provide rhythmic drive and tempo stability. The role of the visual ensemble is to provide the color and spectacle of the music through the use of equipment (primarily pageantry flags, rifles, and sabres) and choreography.

The half-time/competition show is designed to create a musical and visual journey that pertains to a specific emotion, story, and/or theme. All sections of the band are treated equally when designing the show. No section is featured for any specific length of time. Every member has an important role to play in the show. Pre-game performances are performances that elicit school pride and national pride through purely musical means. Marching band competitions are held from the end of September through early November and give an assessment of the growth of the program and awards the students’ hard work and achievement.

Auditions for the marching band occur during the Spring of the previous year. Brass and woodwind instrumentalists audition for placement in their respective sections by playing scales, prepared music, and sight-reading. Percussion students audition by playing rudiments, scales, and technical exercises to demonstrate proper technique and their sight-reading ability to the percussion staff and those designated. Color guard and majorette students audition at a weeklong audition camp. All visual ensemble/auxiliary students, new and returning, will be required to audition on flag or baton, and learn fundamental movement techniques. A routine will be taught during this camp and performed on the final day as well as showing proper technique in marching skills and flag/baton skills and dance for a three-member panel of judges. Selection of the members will be based on the overall ability of the students and the capability they show at the audition. Only those the panel of judges deems capable will be chosen to participate. Attendance, discipline, and grades will also be taken into account. All members will be required to perform on flag, weapons, baton and dance at various times in the half-time production. The visual ensemble/auxiliary will be instructed by the visual ensemble instructors chosen by the band director and those designated to assist.

Beginning in November, the woodwind, brass, and percussion sections will transition to concert season. This is initiated by a musical audition that will determine the band and chair that each student will be assigned. The requirements of the audition are the same as the Baldwin County Honor Band audition requirements. Brass and woodwind auditions are blind and judged by the band directors. Percussion auditions are not blind and judged by the percussion staff. Every brass, woodwind, and percussion student is required to audition. Students will be placed in one of three concert bands depending on the results of their audition. All three bands perform for the Alabama State Music Performance Assessment as well as every concert hosted at Daphne High School. Every student is encouraged to take private lessons. For more information about private lessons or recommended teachers, email a director.

Wind Ensemble

The Wind Ensemble is the premiere concert band at Daphne High School. It is comprised of a select group of highly-skilled instrumentalists. The music performed by this group is of the highest caliber and difficulty of wind band literature. This ensemble is conducted by the head director.

Symphonic Band

The Symphonic Band is a select group of experienced instrumentalists. The music performed by this ensemble is intermediate to advanced based on individual abilities within the ensemble. This ensemble is conducted by an assistant director.

Concert Band

The Concert Band is a select group of novice instrumentalists. The music performed by this ensemble is based on individual abilities with heavy emphasis on building the necessary skills for musicianship. This ensemble is conducted by an assistant director and is open to all instrumentalists, including beginners.

Percussion Ensemble

The percussion ensemble is an auditioned unit of the fall percussion ensemble. Auditions are based on the All-State requirements, reading ability and technical skills. Students in this ensemble are also a part of the Wind Ensemble, Symphonic Band, and Concert Band.

Winter Guard

The Daphne High School Varsity and Junior Varsity Winter Guards are both auditioned units open to members of the Fall visual ensemble. This group auditions in November. The varsity and junior varsity winter guards practice and perform during the spring semester, both during and after school. Both perform for all scheduled local, regional and national competitions. All winter guard members are required to participate in Mardi Gras parades and other full band functions requiring a visual ensemble. Members that play an instrument are also welcome to audition for a concert ensemble.

IMPORTANT DATES

PAGE 16

Percussion Auditions	March 17-20 (after school)
Color Guard and Majorettes Auditions	April 22-25 (after school)
2025-2026 Band Registration Due	May 9 (online, daphne.band)
May Band Booster Meeting	May 13 (6:00p, DHS band room)
<ul style="list-style-type: none">• Required for all new members/parents!	
Rookie Fundamentals Camp	May 12-15 (after school)
<ul style="list-style-type: none">• All new brass/woodwinds• All color guard, majorettes, and percussion	
Daphne High School Spring Football Game.....	May 16 (after school)
Percussion/Auxiliary Camp	July 14-18 (1:00p-5:00p)
<ul style="list-style-type: none">• All Drumline, Front Ensemble, Color Guard, and Majorettes	
Full Band Camp - Week 1.....	July 21-25 (1:00p-9:00p)
<ul style="list-style-type: none">• All Woodwinds, Brass, Percussion, and Auxiliary	
Full Band Camp - Week 2.....	July 28-Aug 1 (1:00p-9:00p)
<ul style="list-style-type: none">• All Woodwinds, Brass, Percussion, and Auxiliary	
Full Band Camp.....	August 5 (1:00p-9:00p)
Picture Day.....	August 7 (1:00p-5:00p)
First Tuesday After-School Rehearsal.....	August 12 (3:10p-5:00p)
First Thursday After-School Rehearsal.....	August 14 (3:10p-5:00p)

Check daphne.band/calendar/band for the official calendar.

All rehearsals are open for parents to watch. Tuesdays are typically in the stadium. This is great opportunity to take pictures!

Reminder - The band rehearses every Tuesday and Thursday until 5:00 pm throughout marching season. Every rehearsal is required – any missed rehearsals (excused or unexcused) will possibly prevent the student from performing. Most of our new material will be learned on those days. Any unexcused absence will prevent the student from performing and will result in a zero for the rehearsal. Having everyone at rehearsal is crucial to our success as an ensemble.

Band camp is a concentrated two-week period where we learn the music, choreography, and drill that is performed and perfected throughout marching season. Instructors are hired to facilitate the learning process by giving students more individualized attention. All students are required to participate in band camp. There are no exceptions. Students who do not participate in band camp will not have the opportunity to learn the needed materials before school begins. Our halftime/competition show is outstanding and with hard work, our band can be very successful this year!

Students will need to bring the following items to camp **every day**:

- Dot book (small spiral-bound notecards)
- Light, comfortable clothing (avoid jeans, hoodies, and other heavy clothes)
- Comfortable tennis shoes (No Crocs, flip-flips, or sandals)
- Hat and sunglasses
- Sunscreen
- Extra pairs of socks (It's inevitable that it will rain)
- Band-issued water jug
 - We give water breaks every 15-20 minutes
 - While setting drill we will all have water jugs to stay hydrated.

Example Schedule of a Typical Day at Band Camp

12:50 – Arrive at band room

01:00 – Full band meeting in band room (Some days we will skip this)

Music fundamentals in sectionals

02:30 – Larger sectional rehearsals (All brass or all woodwinds)

03:00 – Movement fundamentals on practice field

05:00 – Dinner (Provided by band boosters)

06:00 – Set drill with full band on practice field

09:00 – Dismiss

(Note: The second week of camp will be more outside drill than the first week.)

It is important that students eat a good breakfast and lunch everyday BEFORE coming to camp. Some students bring outdoor canopies for shade. Students are responsible for these canopies and any damage due to wind or anything else is not the responsibility of the band.

Schedules, reminders, and changes will be emailed through PowerSchool, posted on our website, sent via Remind the week of the event.

Remind Codes* (Use app or text codes to 81010)

Fall 2025 Freshmen: @daphne2029

Fall 2025 Sophomores: @daphne2028

Fall 2025 Juniors: @daphne2027

Fall 2025 Seniors: @daphne2026

**Note: We will migrate over to ParentSquare in August.*

Email Addresses

Mr. Dumas - jdumas@bcbe.org

Mr. LeBatard - clebatard@bcbe.org

Mr. Moorer - jrmoorer@bcbe.org

Mr. Pippin - rpippin@bcbe.org

Phone Numbers

Band Office - (251) 621-1080

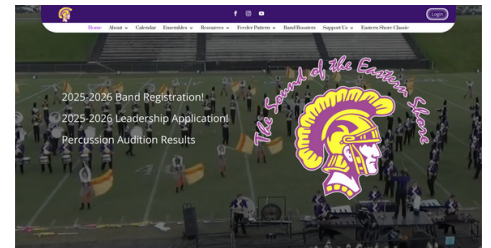
School Office - (251) 626-8787

Websites

Band Website - daphne.band

Daphne High School Website - bcbe.org/dhs

Baldwin County Public Schools Website - bcbe.org



If you have any questions, comments, or concerns, please email one of the directors. We are looking forward to an amazing 2025-2026 school year!

GO TROJANS!